A photograph of a family of three. A man in a blue shirt is leaning over a table, smiling broadly. A woman in a purple shirt is also leaning over the table, smiling. A young girl with a ponytail is sitting at the table, looking at an open book. The background is a bright, indoor setting with a window.

**LUPUS SOCIETY
OF ALBERTA
ANNUAL REPORT
2009 — 2010**

**Enhancing Lives Through
Education, Support, Research**

BOARD & COMMITTEES

Board Members	10/01/09—03/16/10	03/16/10—09/30/10
President	Norma Jaenen	Deborah McCaig
Vice-President	Muriel Kaun	Muriel Kaun
Northern Director	Wanda Bootsma	Ian Montgomerie
Southern Director	Rose Wenzel	Josée Davies
Director At Large	Deborah McCaig	Bonnie Thomson-Baker
Director At Large	Doug Jacula	Doug Jacula
Past President	Christina Seger	Norma Jaenen
Treasurer	Muriel Kaun	Doug Jacula
Executive Director	Rosemary E. Church	Rosemary E. Church

Committee Chairs

Education /Public Awareness	Christina Seger & Norma Jaenen	
Support	R. Church, Wanda Bootsma, Rose Wenzel	
Communications	Norma Jaenen. Deborah McCaig	
Fund Development	Rosemary E. Church	
Nominating	Christina Seger	Norma Jaenen

Medical Advisory Panel

Lynne Robertson, MD, FRCPC, Internal Medicine & Dermatology

Liam Martin, MB, MRCPI, FRCPC, Associate Professor,
Faculty of Medicine, University of Calgary

Rob Rennebohm, MD Pediatrics, Rheumatology,

Stephanie Keeling, MD Internal Medicine, Rheumatology

Elizabeth Miles, MSc, Chartered Psychologist

Britt Simmons, MD Hospitalist, Emergency Medicine

Norma Jaenen, BSN, BA

The **Medical Advisory Panel** is an essential source of support for the Society. These professionals bring a diversity of training and knowledge and thus cover the range of issues that challenge all those diagnosed with lupus. Their assistance is always valued and their professional advice is respected and acknowledged.

BOARD OF DIRECTORS, KEY VOLUNTEERS & STAFF



Deborah McCaig



Muriel Kaun



Norma Jaenen



Ian Montgomerie



Josée Davies



Wanda Bootsma



Rose Wenzel



**Bonnie
Thomson-Baker**



Doug Jacula



Christina Seger



**Nha Chau
Website
Volunteer**



**Barb Manley
Calgary
Casino Manager
Volunteer**



**Sheri McLeod
Bookkeeper
(Staff)**



**Morgan Brown
Summer Admin.
Assistant
(Staff)**



**Rosemary
Church
Executive
Director**

REPORT OF THE PRESIDENT & EXECUTIVE DIRECTOR

The advancement of education and awareness of lupus is the hallmark of success for the Lupus Society of Alberta and this has been evident in the 2009 — 2010 term. We have reached more people with our programs and services and helped them gain a better understanding of their disease and what they and their supporters can do to achieve greater control of their disease and a more fulfilling life.

We strive to ensure that the material we provide is current, credible and reliable and will assist lupus patients enjoy the best possible quality of life. Encouraging a positive attitude and day to day wise decision-making in the management of one's lifestyle and health are key components in our messages.

The Society has supported the work of young researchers for many years through the annual Dr. Ian Watson Award for the best Fellows Podium Presentation on Lupus. This \$1000 prize is presented at the annual Canadian Rheumatology Association Conference. We are proud to congratulate our 2010 recipient, Dr. Amanda Steiman, Rheumatology Resident and look forward to her ensuing work in this field.

We have initiated two new projects this term; our First Nations Lupus Program and a dedicated Information Package for the Newly Diagnosed. These have already proven to be extremely helpful to these lupus communities and we continue to expand both with additional components. These and on-going programs and services have been made possible thanks to the continued generosity of our donors. We are grateful for the loyalty of those who are long term supporters and the interest of new supporters who give in spite of the economic downturn our province has experienced.

The LSA always enjoys opportunities afforded by such events as corporate Health Fairs to enhance awareness of lupus. These occasions along with our “**Step Out for Lupus**” campaigns afford us excellent forums to educate and inform in a collegial and friendly environment. The “Step Out” projects also raise essential funds for the organization and build a greater closeness in this community of men, women and children who must meet a variety of health, work, study and life challenges.

We are very optimistic about new and promising lupus research which will offer better lupus treatments and improved long term prognosis for patients. As a Board and staff we are also excited about continued development within our organization. As we monitor and evaluate our circumstances and effectiveness we will take every opportunity to ensure we utilize new ways to communicate, educate and support.

Deborah McCaig
President

Rosemary E. Church
Executive Director



Lethbridge



Bonnyville

Step Out For Lupus 2010



Edmonton



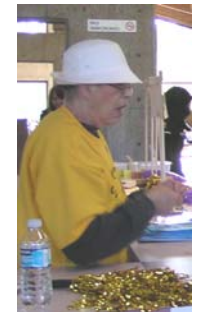
Calgary

Step Out For Lupus
LUPUS FALL

2425

SUPPORTERS & VOLUNTEERS

Volunteers are critical to the LSA and our provision of services around the province. They work at Education Days, Health Fairs, Casinos and our Step Out For Lupus events. They serve on our Board of Directors help out in the office and maintain our website. They stuff envelopes and give one-on-one support to those who need a friendly and comforting voice. Thanks to each one for their support.



The Lupus Society of Alberta places a high value on our relationship with you, our donors. Without your support we would not be able to achieve our mission: “To provide education and support on lupus and lupus related issues and enable research to find effective treatments and cures”. We thank you for your commitment to us.

We believe that transparency and accountability are essential to our success. With this in mind, we are members of **Imagine Canada’s Ethical Code Program**.

The Ethical Fundraising and Financial Accountability Code lays out a set of standards for charitable organizations to manage and report their financial affairs responsibly. By adhering to these standards, we are complying with generally accepted practices for soliciting and managing donor dollars. This is important because you, our supporters, are entitled to transparency and the greatest impact possible for your investment in us.

If you have any questions about our adherence to the Ethical Code, please feel free to contact me at 1-888-242-9182, 403-228-7956, lupuslsa@shaw.ca or visit our website www.lupus.ab.ca. You can also request a copy of our audited financial statements.

The Ethical Code itself can be downloaded by going to www.imaginecanada.ca.



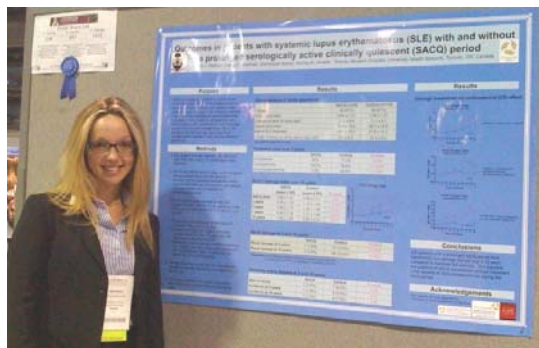
A handwritten signature in black ink, appearing to read "Rosemary".

Rosemary E. Church
Executive Director

Our study investigated SLE patients with a prolonged (i.e., at least two year) SACQ (clinical activity with serological quiescence) period, during which they could be taking an antimalarial, but not steroid or immunosuppressive medication. We compared their rates of damage accrual, and incidence of renal and cardiovascular damage, over a decade from the start of the SACQ period, to SLE controls with active disease, matched for age, sex, disease duration, decade of entry into the clinic studied, and SLICC damage index score.

This study supports the practice of close clinical monitoring, without the use of corticosteroids or immunosuppressives, during a prolonged (SACQ) period, and suggests that the disease runs a relatively indolent course in these patients.

Dr. Ian Watson Award Recipient 2010 Dr. Amanda Steiman



Principal Investigators:
Drs. Dafna Gladman and Murray Urowitz;
Biostatistician: Dominique Ibañez

SUPPORTERS

FOUNDATIONS

BMO Charitable Foundation, BMO Financial Group

EnCana Cares Foundation

FRATERNAL & COMMUNITY ORGANIZATIONS



Burgis Ukrainian Greek Orthodox Church

Chin Community

Daughters of Penelope

Gamma Mu - Beta Sigma Phi

Job's Daughters Alberta Alumni Association

Lakeview Goodwill Club

Laureate Gamma Chapter of Beta Sigma Phi

Lions Club of Calgary

Medicine Hat High School (Social Committee)

Order of Royal Purple Lodge 32

Royal Canadian Legion No. 1 Branch

Sunflower Community Resource Program

UNITED WAY DONOR CHOICE PROGRAMS

United Way of Calgary and Area

United Way of Lethbridge

PRIVATE DONORS AND MEMORIALS

The LSA is privileged to have the financial support of many private donors who help to ensure the on-going delivery of our programs and services. We also sincerely appreciate those families and friends who pay tribute to their loved ones through Memorial Donations to the society.

SUPPORTERS

CORPORATE DONORS & SPONSORS

101040033 Saskatchewan Ltd.
1011205 Alberta Ltd
1160042 Alberta Ltd. A/O Hydrodig Edson
1263458 ALBERTA LTD.
135482 Canada Inc
1407969 Alberta Ltd.
897932 Alberta Ltd.
ABC Septic Tank Service
Aon Reed Stenhouse Inc.
ATB Financial
ATCO EPIC
ATCO Gas
ATCO I-Tek Inc.
ATCO Structures & Logistics
Avenge Energy Services
B Double F Forestry Services Ltd.
Beaver River Welding Ltd.
Brett Dore Consulting Ltd.
Canadian Energy Pipeline Association
Cinnaroll Bakeries Ltd.
Clifden Security Systems
Dale Fleming Consulting Ltd.
Drawbor Drafting Services Ltd.
Engineered Air —
 Resman Community Service
ENKO Services Ltd.

Fitzel Drill Collar Specialists (1994) Ltd.
Forge Contracting Corporation
Galko Homes
Greenedge Precision Fencing Inc.
Haywood Securities Inc.
Hood Packaging Corporation
Hydrodig Fort McMurray 1126342 AB Inc.
Hydrodig Ltd.
Jen-Col Construction Ltd.
Lakeland Credit Union
LCR Consulting Ltd.
Millenium Vac Inc.
Nitti Gritti Cleaning Inc.
Pik N Pak Produce Ltd.
Raeburn McInnes Professional Corp.
Rayzor's Edge Safety Services Ltd.
Rougeau Farms
Saamis Memorial Funeral Chapel
 & Cremetorium
Skaha Petroleums Ltd.
Tektonik Controls Ltd.
TELUS
The Legitimizer Corp
Tundra Engineering Associates Ltd.
Vortec Controls Ltd.
Worley Parsons



EMPLOYEE & PROFESSIONAL ORGANIZATIONS

ATCO I-Tec Employees

ATCO Gas "Employees Participating in Communities"

ATCO Structures & Logistics (Employees)

Canadian Energy Workers Association

The work of the Lupus Society of Alberta could not be accomplished without the loyal and generous support of all our donors. The recognition of the work we do and the programs we provide is shown through these gifts.

The Board of Directors and all those who benefit from our services greatly appreciate the kindness of all who contribute financially to the Society.

We extend sincere appreciation to all our donors whose contributions in smaller amounts, although very important to the Society and the work we do, are regrettably not included due to space limitations.

*Donate a Car Canada has found a way for **any charity** to benefit from the generous donations from people such as yourself. They take care of every aspect of the donation process, and all the Lupus Society of Alberta needs to do is write you a tax receipt after receiving the profits of sale.*



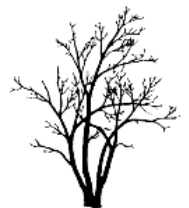
www.donateacar.ca

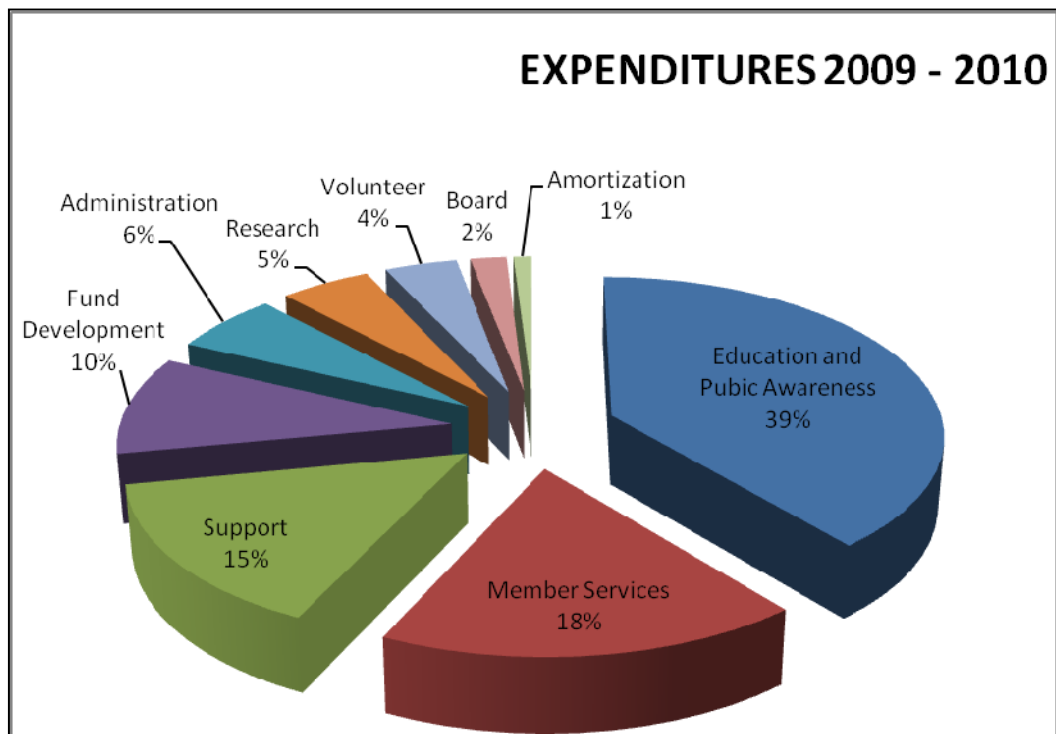
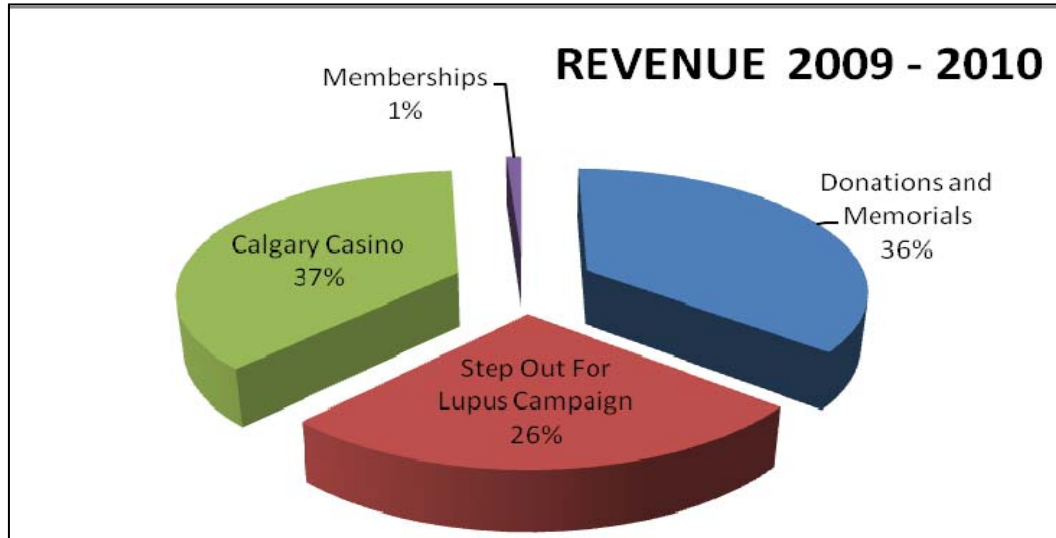
This website € donate to the online. Your d private, and helps support the issues and causes you care most about. www.canadahelps.org



The grace, flexibility and complexity of the willow reflect qualities lupus patients develop as they meet the challenges of their illness.

The beauty and endurance of the willow make it an empowering symbol for people affected by lupus.





OUR MISSION

To provide education and support
on lupus and lupus related issues
and enable research to find
effective treatments and cures.



LUPUS SOCIETY OF ALBERTA



PROVINCIAL OFFICE
Suite 200, 1301 - 8 Street SW
Calgary Alberta T2R 1B7

Telephone: 403-228-7956 Toll-Free: 1-888-242-9182

Fax: 403-228-7853

E-mail: lupuslsa@shaw.ca

Website: www.lupus.ab.ca